



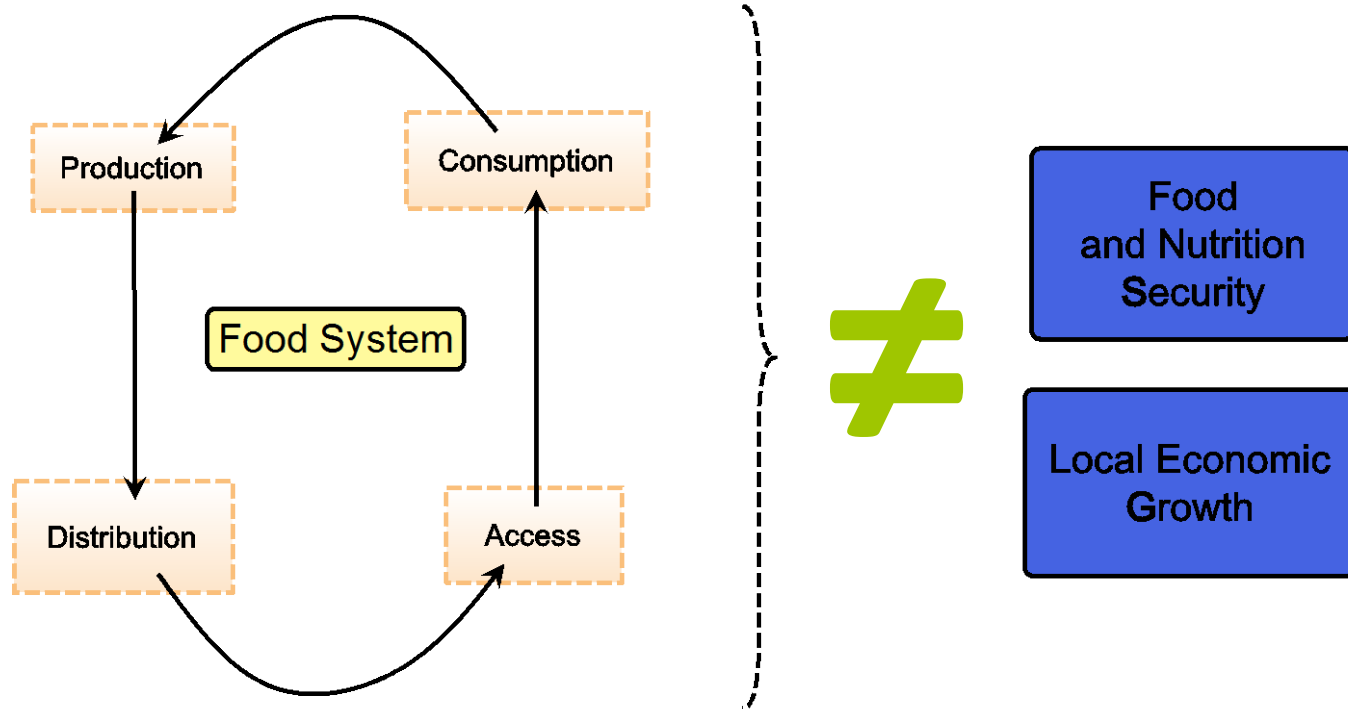
FFAR Pilot Program: Tipping Points



A Productive And Equitable Food System Has The Ability To Lift People Out Of Poverty And Into Food Security

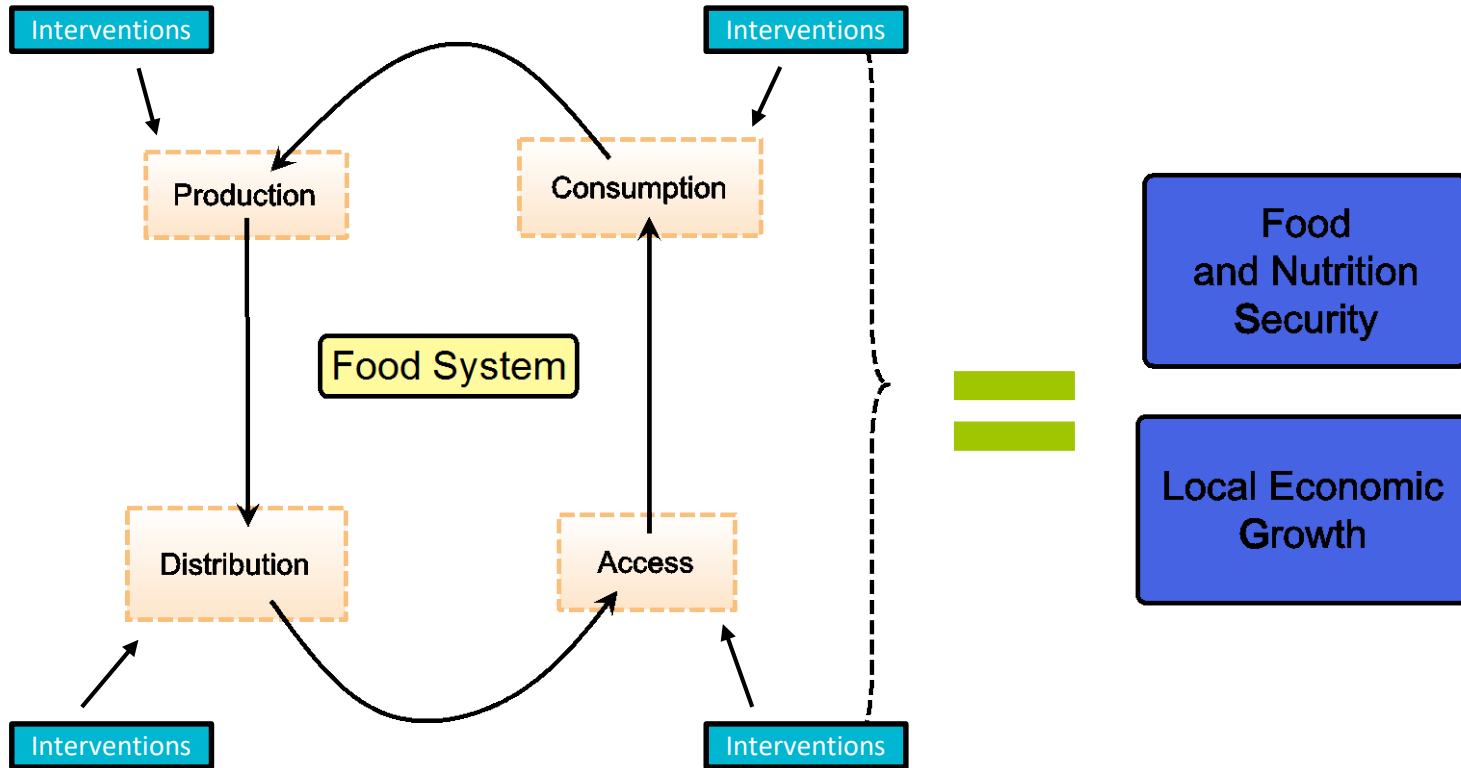
Program Goal: Understanding regional/local food systems, the connections between components of the food system, and how targeted interventions can lead to change.

Food System Activities



This diagram is **NOT all inclusive

Does Changing the Food System Lead to Impact?



This diagram is **NOT all inclusive

How Is The Food System Targeted?

In many ways...

Consumption

- Behavior Change
- Affordability
- Etc...

Access

- Grocery stores
- Farmers' markets
- Corner Stores
- Etc...

Production

- Increase healthy food production
- Increase revenue
- Etc..

Distribution

- Food hubs
- Farm to Institute Initiatives
- Etc...

This diagram is **NOT all inclusive



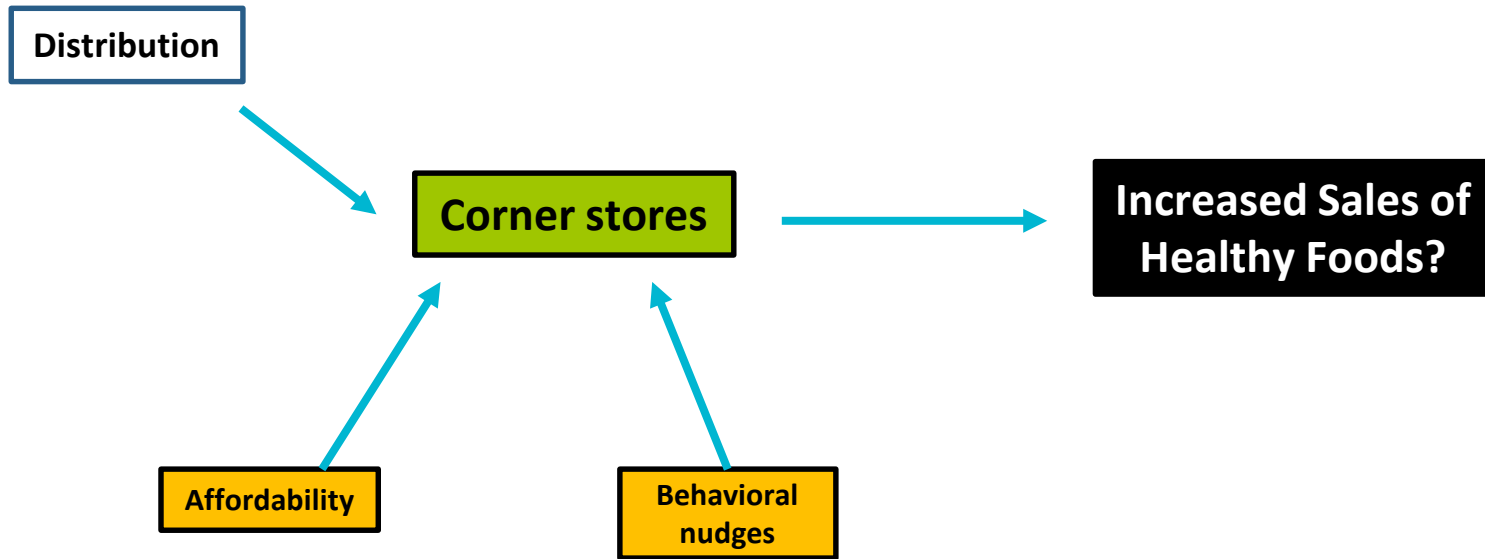


EXAMPLE

Access: Corner stores as sources of healthy, affordable food

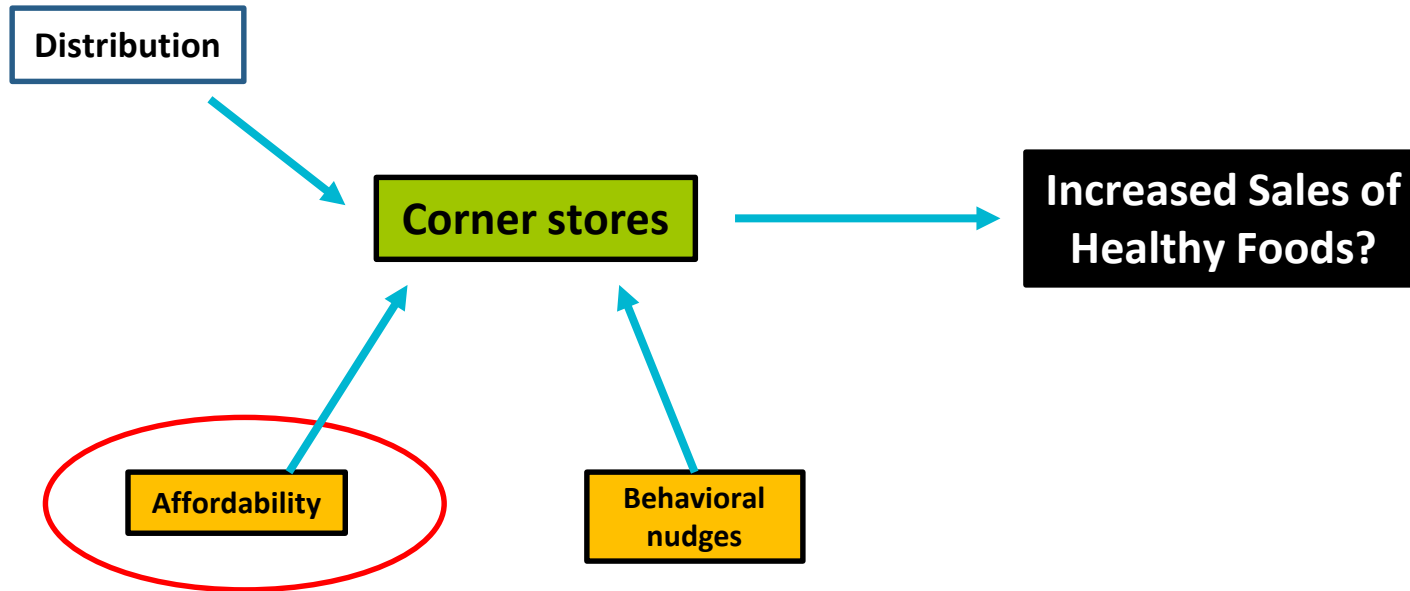


Example: Corner stores as sources of healthy, affordable food

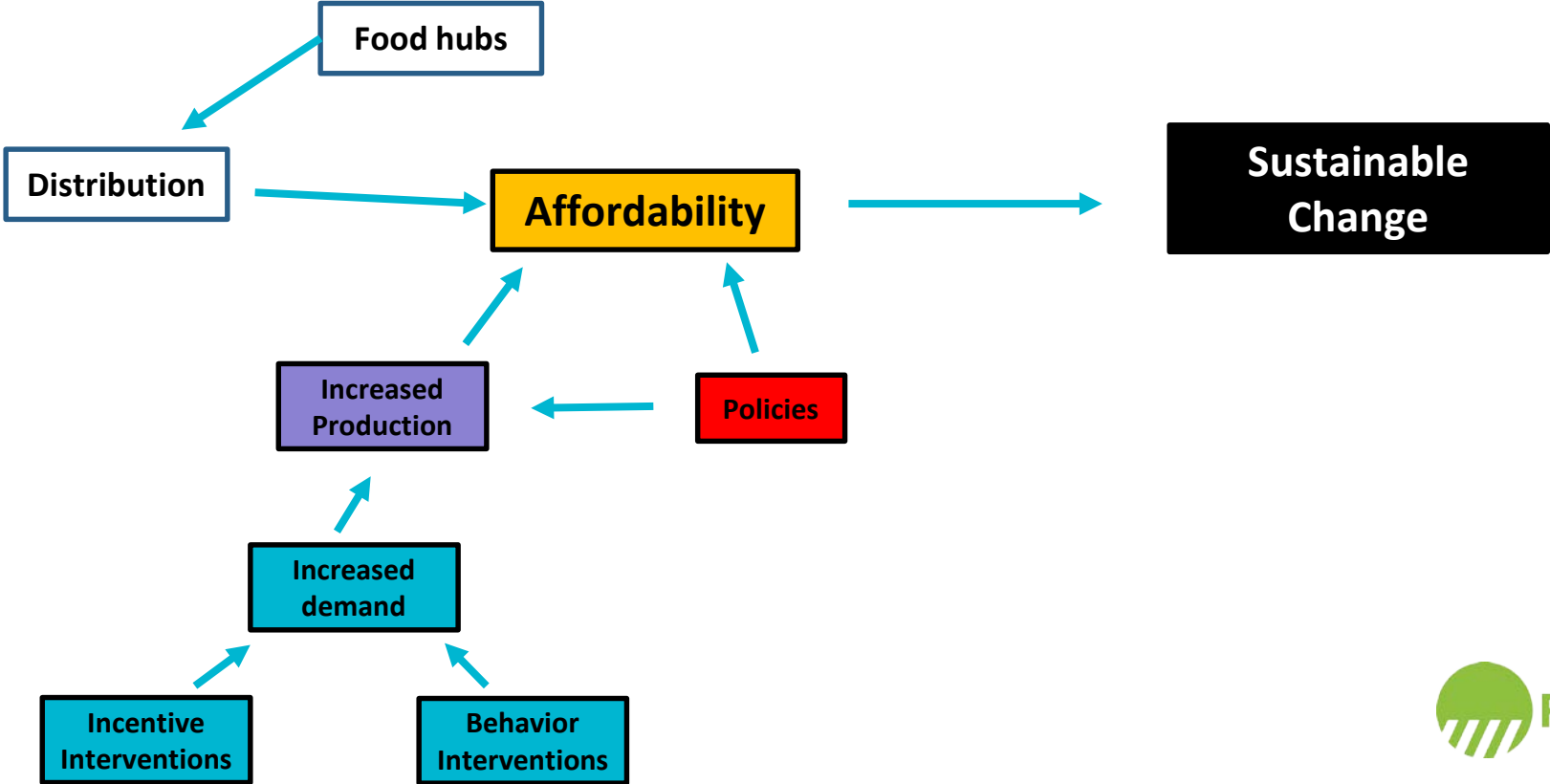


We want change that leads to
SUSTAINABILITY

Hypothetical example 1



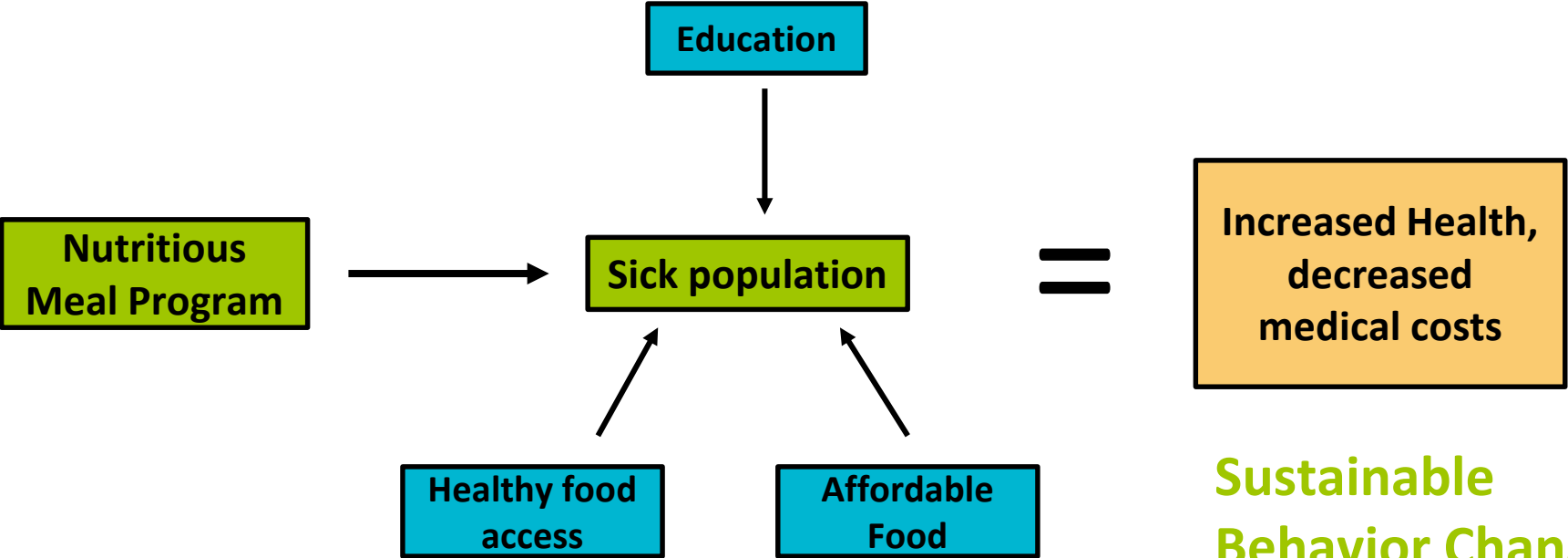
Hypothetical example 1



Hypothetical example 2

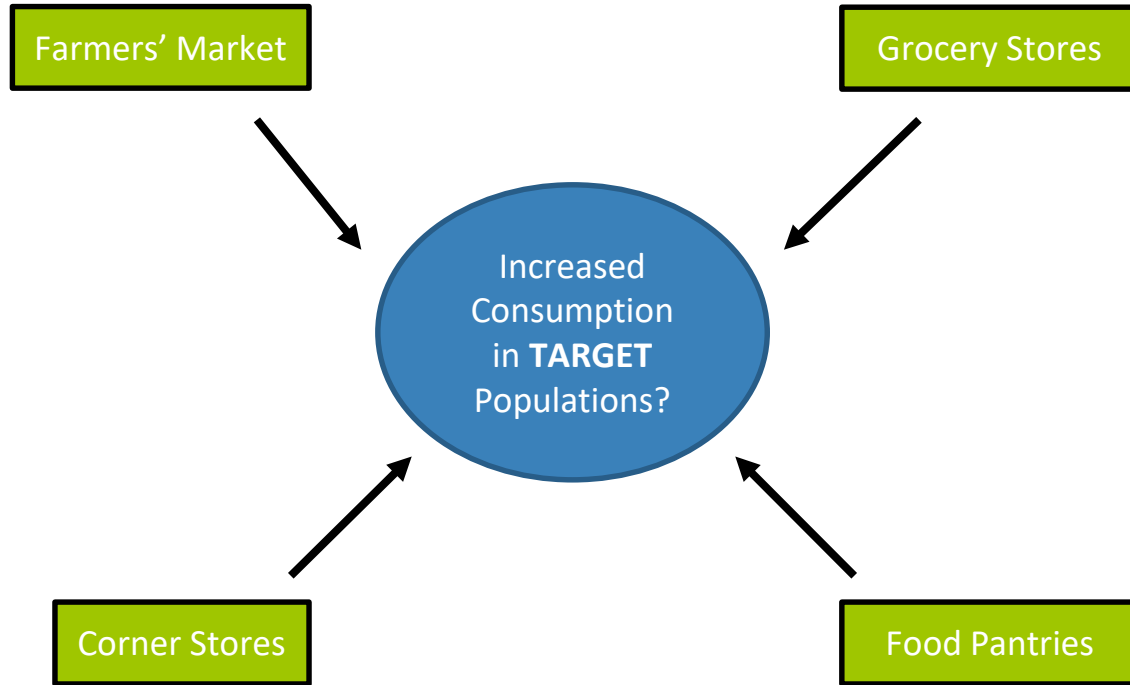


Hypothetical example 2

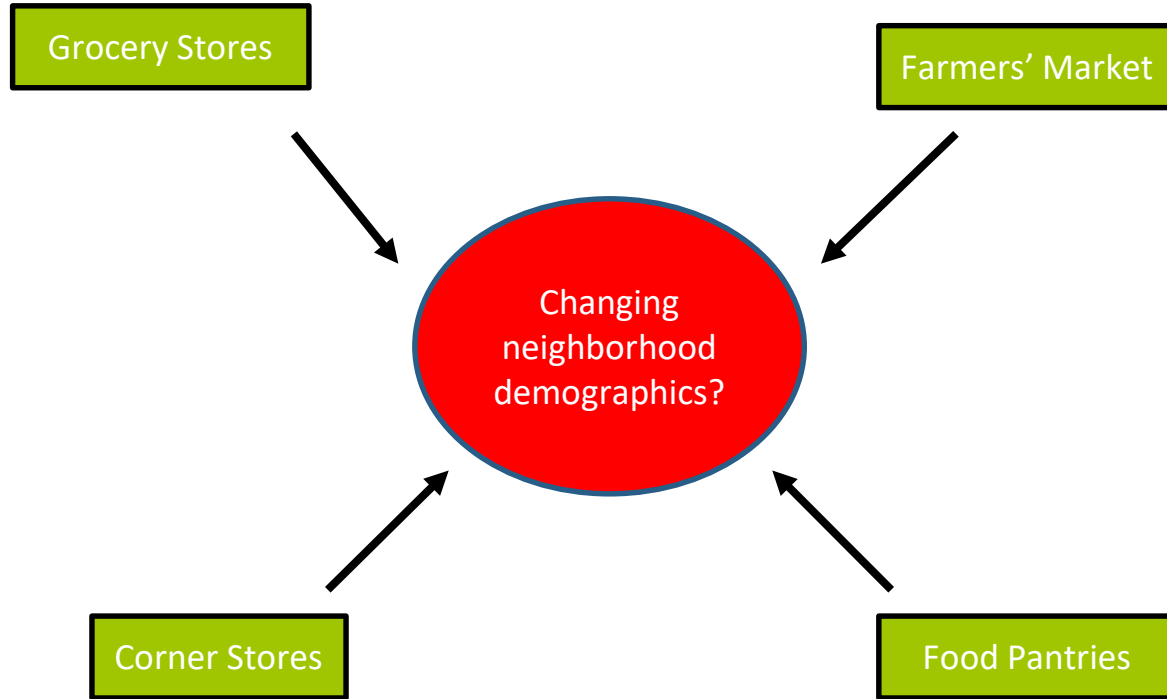


Sustainable Behavior Change??

Hypothetical example: Unintended Consequences?



Hypothetical example: Different types of access



PILOT PROGRAM: TIPPING POINTS

Goal: Understanding regional/local food systems, the connections between components of the food system, and how targeted interventions can lead to change.





PROGRAM ELEMENTS

Overview

Program Elements

- Coordination of Efforts
- Data Collection
- Computational Modeling

Element One: *Coordination— Existing Local Efforts*

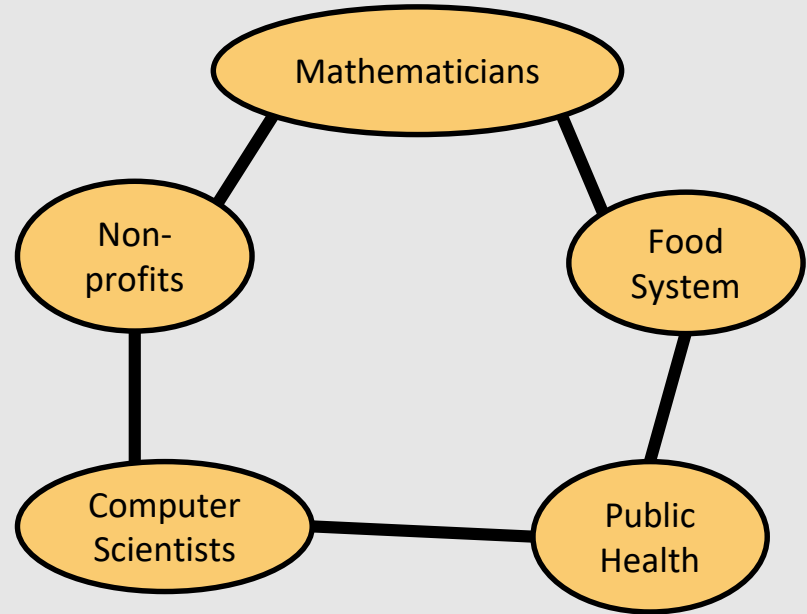
- Coordination of existing efforts—multiple interventions
- Collaboration to enhance outcomes of interventions that interact and influence each other
- Partnerships with local government, hospitals, insurance groups, etc...



Extension can drastically enhance impact the of this program

Element One: *Collaboration Between Community and Research*

- Multi-disciplinary collaboration is necessary to achieve program goals
- Academics, non-profits, public sector



Element Two: *Data*

- What do you measure?
 - Measurements for inputs
 - Measurements for outputs
- How do you measure it?
 - Are there good tools/methods available?
 - Do these tools need to be created?
- Coordination of data standards/measurements between different funded regions: how to make data comparable?

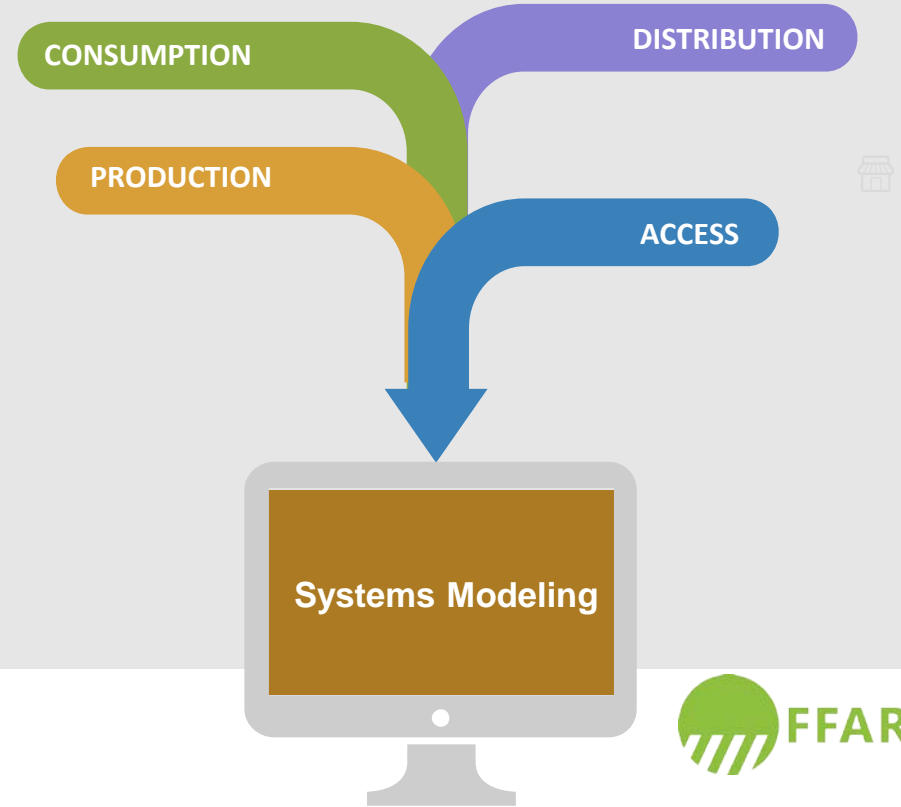
Extension participation can lead to a large collective impact



Element Three: *Computational Modeling*

Why systems modeling?

- Determine why the system is working or failing
- Determine how the system can be influenced by interventions and the unintended consequences and benefits
- Determine how system as a whole adapts to interventions
- Determine how multiple pathways can lead to similar outcomes



Element Three: *Computational Modeling - Development*

Requirements

- Informed by empirical data
- Integrate multiple factors throughout the food system to increase our understanding of how interventions and factors within the community impact food security and overall health
- No specific mathematical or computational model is advocated for by this program

Element Three: *Computational Modeling — Model Refinement*

- Realism, robustness, ability to generate useful insights
- Potential to work with and test model against other funded regions data
 - Increase the effectiveness
 - Test new theories—multi-intervention approach

Potential Program Outcomes

- Understanding of the immediate and longer-term impacts interventions have on food systems
- Greater understanding of change that arises from individual interventions working together to transform systems
- Standardization and translation of data and collection methods across funded regions
- Creation of tailored, multi-level interventions

Potential Program Impacts

- Transformation of local systems that include interventions and factors outside the food system (housing, health care, jobs, etc...)
- Build support for policies and programs that encourage positive transformations
- Enhanced and sustained outcomes
- Effectively translating interventions to other regions

Program Requirements

- Applications are open to:
 - Non-profits
 - Universities
 - Local government entities
 - Other public/private sector groups
- Targeting regions with existing interventions
 - Applicants must build partnerships and leverage \$750 K in local/regional intervention investments

*****Program is contingent on securing matching funds**



What we are looking for

- Testing and evaluating existing approaches in conjunction with computational and mathematical approaches
- Examination of multiple food-system interventions and community/regional factors

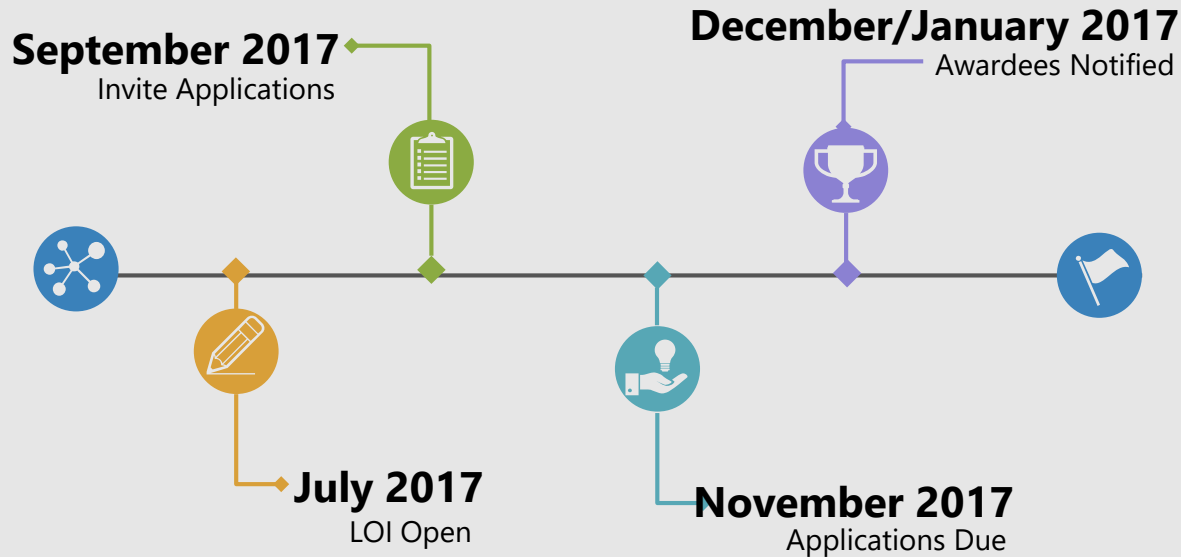
What Tipping Points Does Not Do...

- Create new, novel stand-alone interventions
- Stand-alone coordination or planning grants
- Projects whose sole purpose is to collect and analyze original data

Program Funding

- Program is contingent upon matching funds
- FFAR committed funds: \$4 M
- 4 regions will be funded and selected

Application Process Timeline



FFAR is investing
\$4M over a
3-5 year grant
term

Partnerships Needed





Questions?

THANK YOU

How to reach FFAR



John Reich, PhD
Scientific Program Director

 jreich@foundationfar.org



Shonda Andrews
Development Associate

 sandrews@foundationfar.org

Connect with FFAR



foundationfar.org



[@FoundationFar](https://twitter.com/FoundationFar)
[@RockTalking](https://twitter.com/RockTalking)

